



**MISSION STATEMENT
MANNHEIM 2030**

GLOBALIZATION

0.5%

of the earth's surface
is urbanised

54%

of the world's population
is urban (2014)

80%

of global economic output
comes from urban areas

© PHILIPP RODE, LSE CITIES AND GLOBAL COMMISSION ON THE ECONOMY AND CLIMATE 2014.

CHALLENGES OF THE VUCA-WORLD

V

- **Volatility**
- Fast change without a clear predictable trend or pattern

U

- **Uncertainty**
- Frequently disruptive changes; past is not a predictor of the future

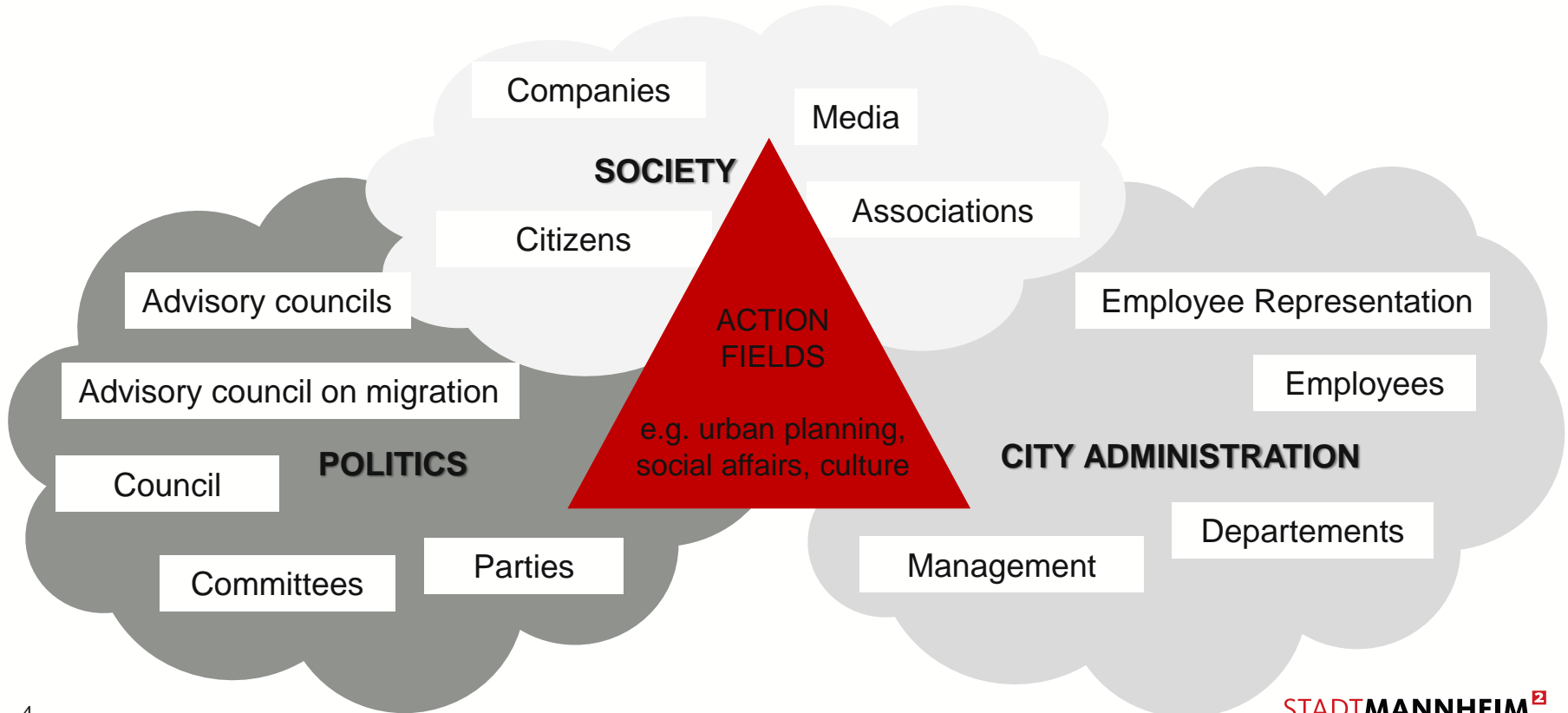
C

- **Complexity**
- Multiple, interdependent causes

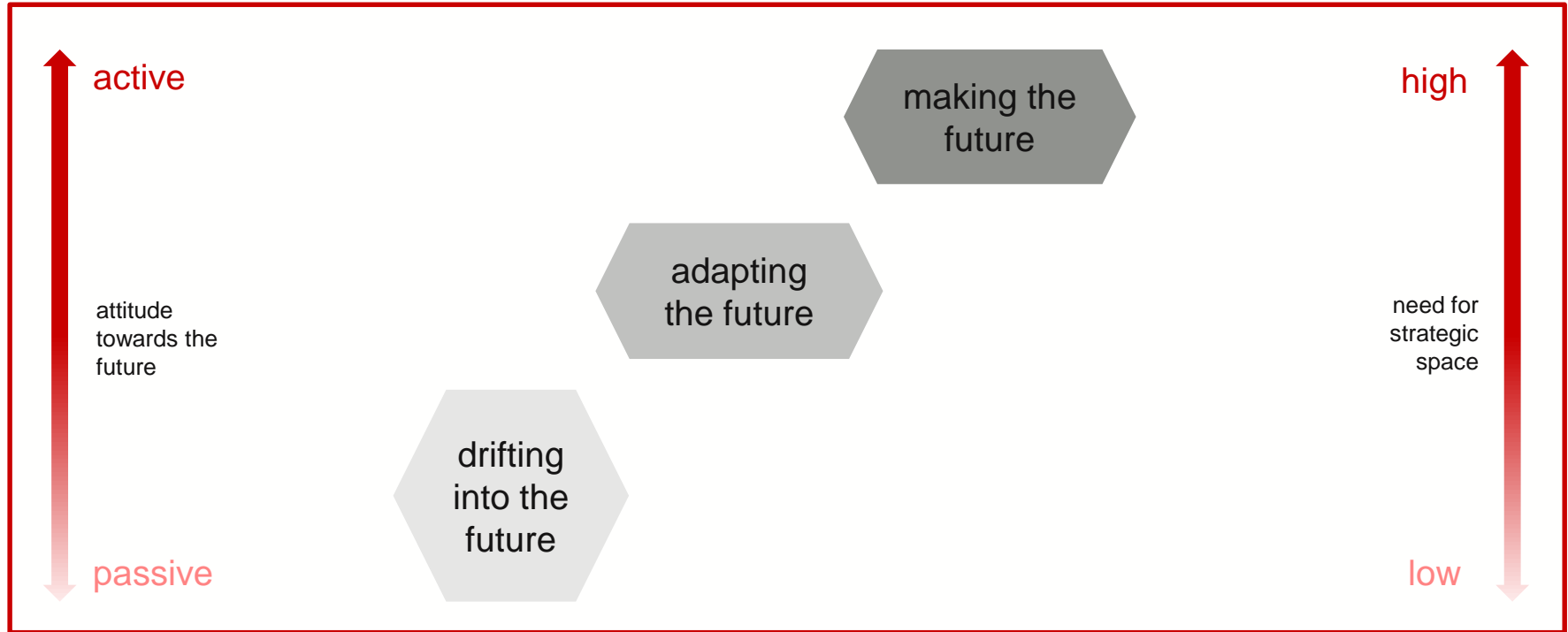
A

- **Ambiguity**
- Little clarity about what is `real´ or `true´

COMPLEXITY OF MUNICIPAL STRATEGIC PLANNING



MARKET TAKER OR MARKET MAKER



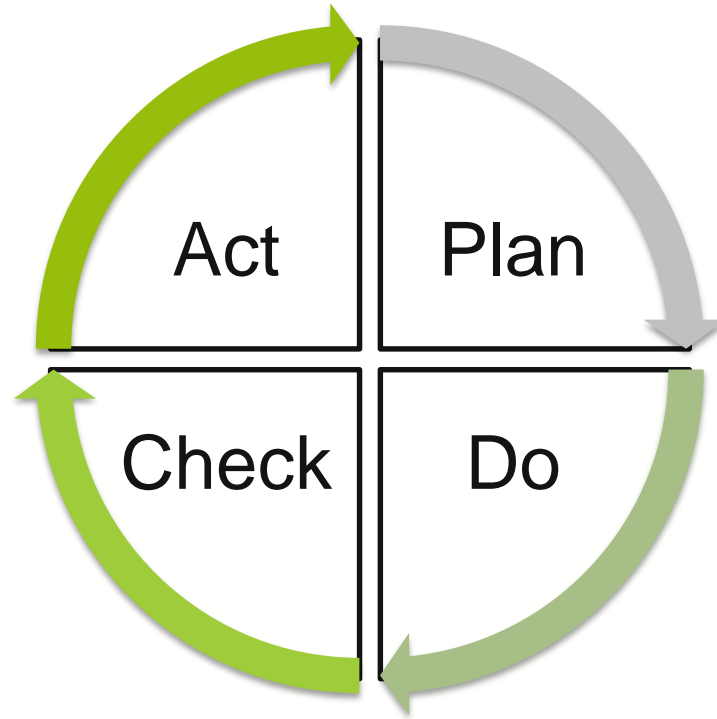


DAS MODELL MANNHEIM

THE MANNHEIM MODEL

LE FÜR EINE MODERNE
GROSSSTADT

EVALUATION OF ACTION USING PDCA



STRATEGY CITY OF MANNHEIM

Strategy - City of Mannheim



EXAMPLES



Ending poverty in all its forms and everywhere.

| Strategic target | Name | Unit of measure | 2011 | 2012 | 2013 | 2014 | 2015 | 2016 |
|------------------|--|-----------------|------|------|------|------|------|------|
| 1 | Guaranteed minimum rate | Percent | 9.9 | 10.0 | 10.3 | 10.8 | 11.0 | 10.9 |
| 1 | SGB II rate of people unfit for work and claiming benefit under 15 years | Percent | 17.7 | 18 | 19.1 | 20.8 | 20.8 | 20.6 |



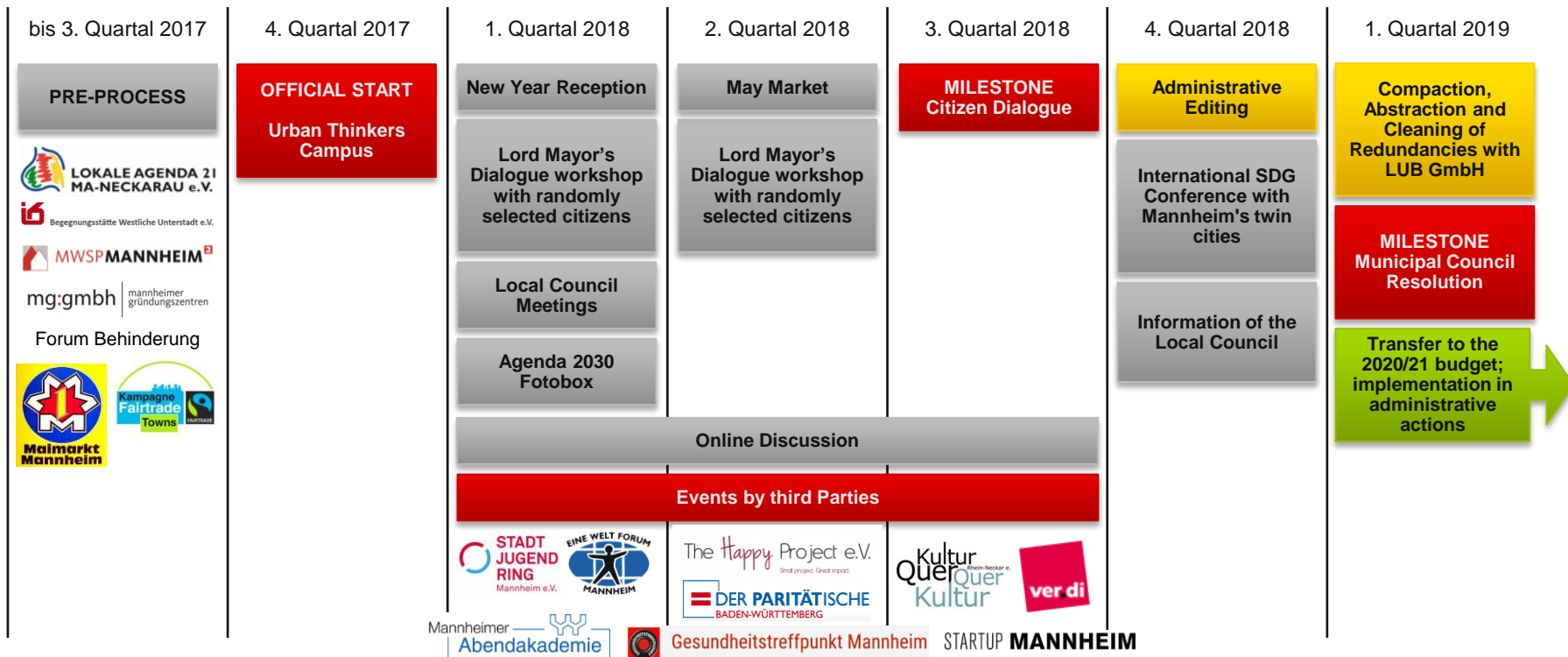
Guaranteeing inclusive, fair and high-quality education and promoting opportunities for lifelong learning for all.

| Strategic target | Name | Unit of measure | 2011 | 2012 | 2013 | 2014 | 2015 | 2016 |
|------------------|--|-----------------|--------|--------|--------|--------|--------|------|
| 1 | Number of students at Mannheim higher education facilities | Students | 25,115 | 27,207 | 28,014 | 28,648 | 28,786 | |
| 1 | Number of all-day nursery places | Percent | 38.2 | 38.9 | 43.7 | 46.7 | 49.7 | 51.7 |
| 1 | Number of children without speech difficulties at start of schooling | Percent | 79.8 | 79.7 | 83.1 | 81.8 | 80.8 | 81.3 |
| 1 | School child daycare rate | Percent | 47.1 | 49.0 | 55.3 | 58.9 | 61.0 | 61.7 |
| 1 | Advanced secondary school transition rate | Percent | 46 | 47.5 | 49.7 | 49.4 | 51.15 | 48.1 |



**PROCESS OF
COMPILING THE
MISSION STATEMENT
„MANNHEIM 2030“**

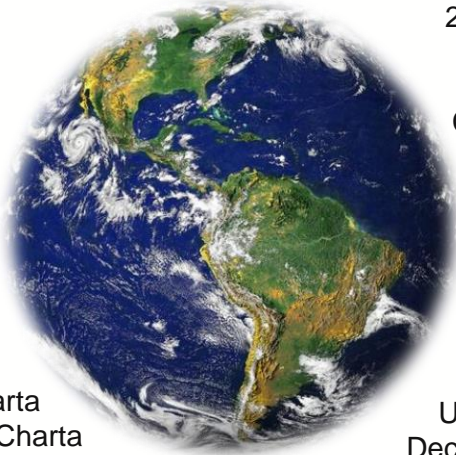
SCHEDULE



FROM GLOBAL TO LOCAL

Barcelona
Declaration
"The City and
the Disabled"
(1995)

Aalborg Charta
"Agenda 21" – Charta
of European Cities &
Towns Towards
Sustainability (1994)



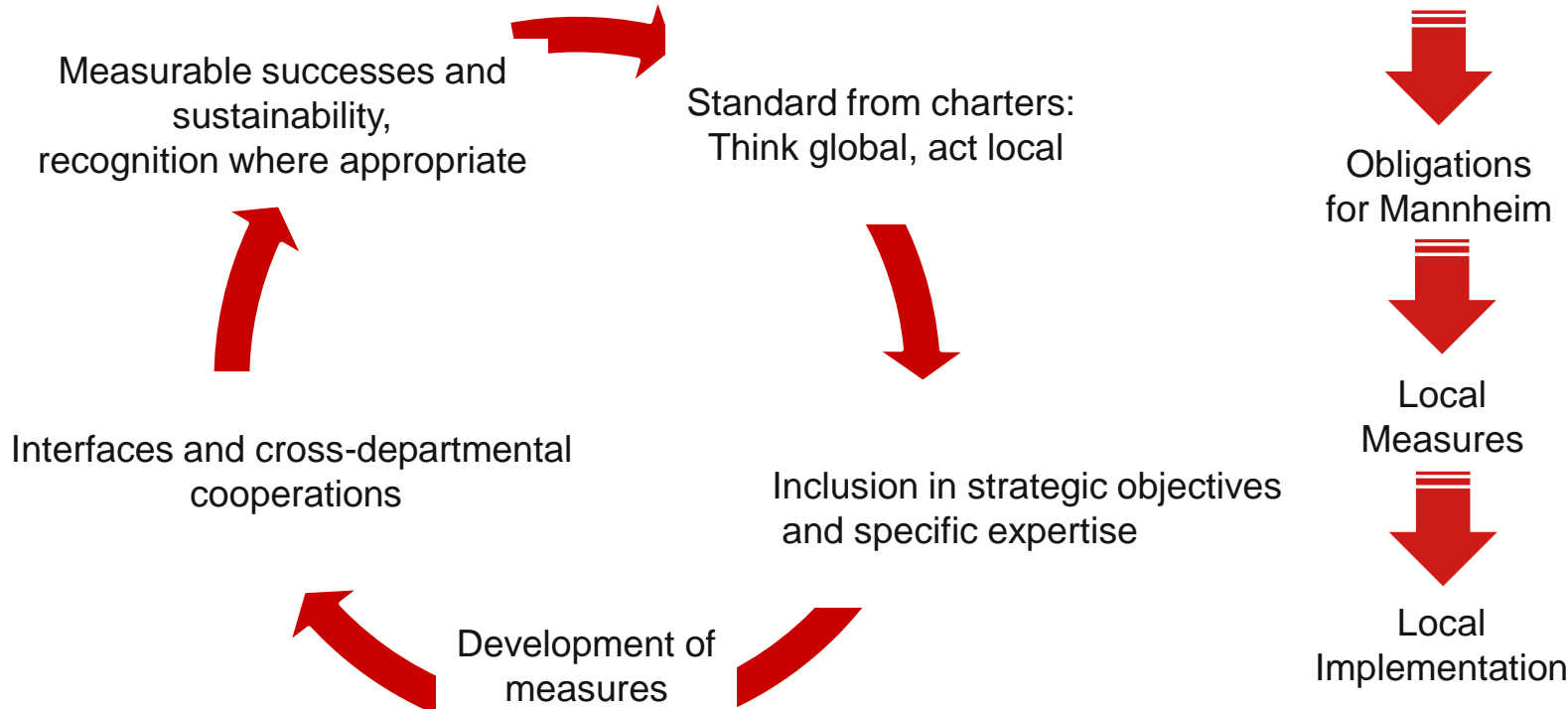
EU Charta for
Equality of
Women and Men
in Local Life

Mannheim
2020 Climate
Protection
Plan,
Covenant of
Mayors

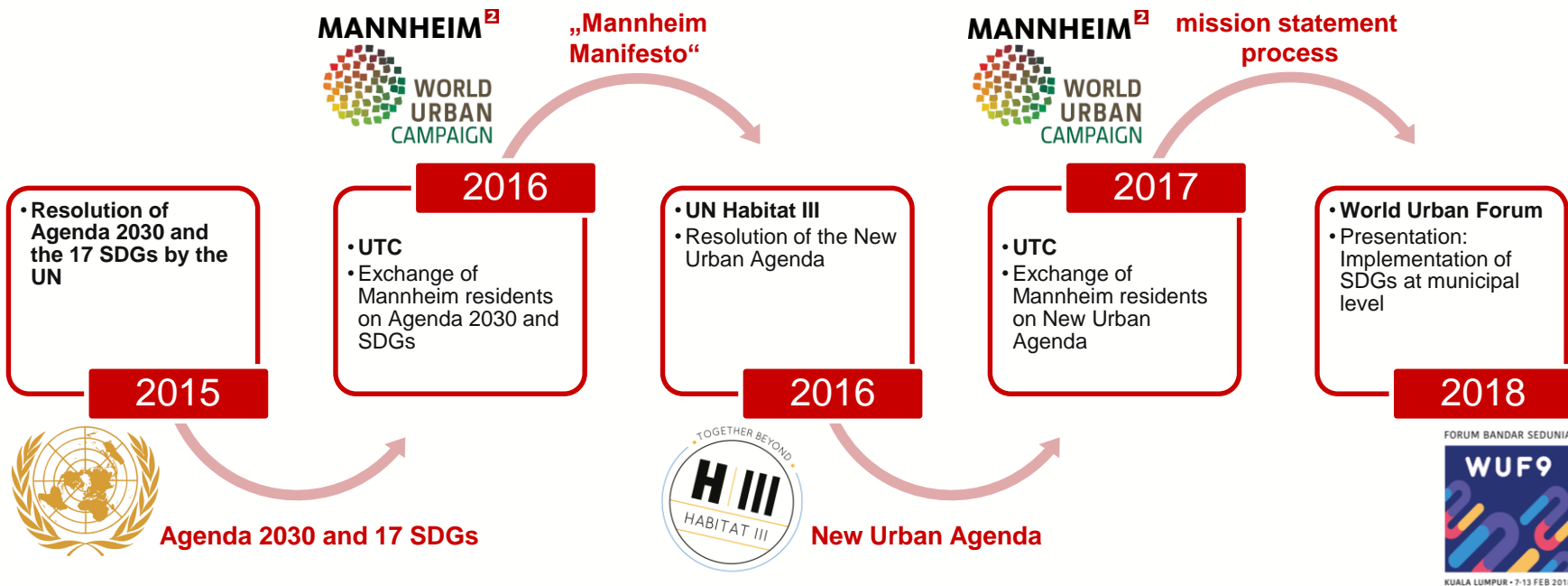
UNESCO
Declaration on
Cultural
Diversity



CHARTA MANAGEMENT: SUSTAINABILITY MONITORING AT A COMMUNITY LEVEL



INTERTWINING GLOBAL AND LOCAL PROCESSES





SUSTAINABLE DEVELOPMENT GOALS



THREE LEVELS OF EFFECTS OF THE SDGS



C. MEASURES OF THE LOCAL AUTHORITY WITH LOCAL EFFECTS

- financial support of jobs
- local labor market program
- education help

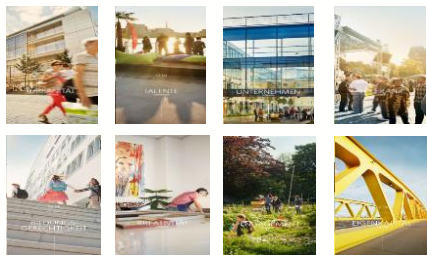
B. MEASURES OF THE LOCAL AUTHORITY WITH INDIRECT GLOBAL EFFECTS

- procurement procedure
- fair trade
- ILO-working standards

A. MEASURES OF THE LOCAL AUTHORITY WITH DIRECT GLOBAL EFFECTS

- bilateral development projects (for example Kilis City)

ROLE MODEL "MANNHEIM 2030" AND AGENDA 2030

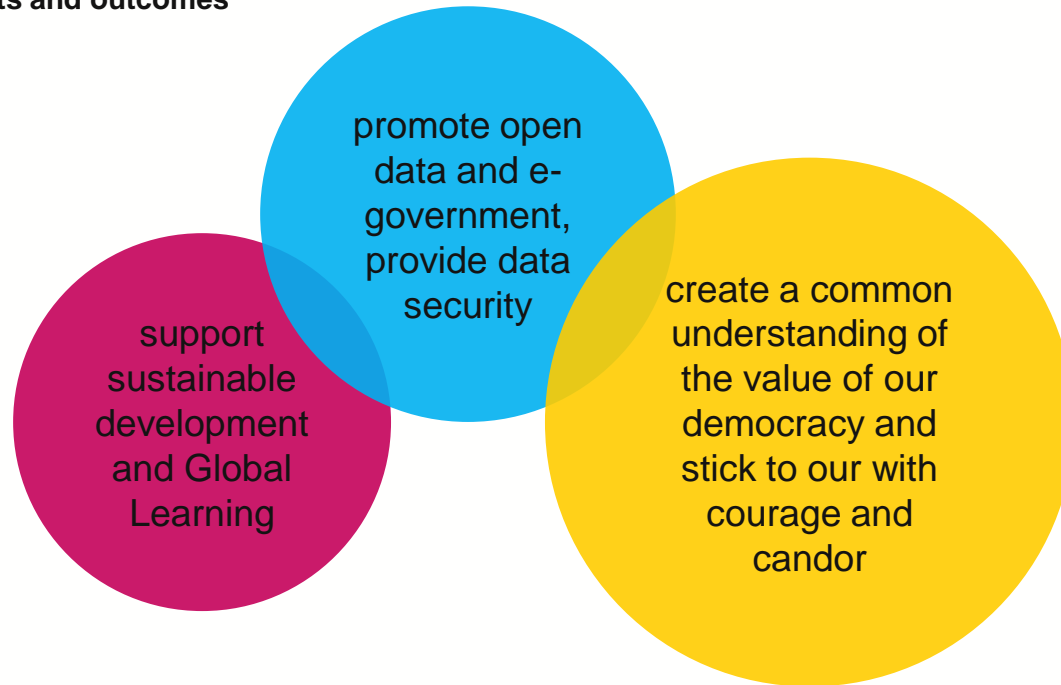




URBAN THINKERS CAMPUS

URBAN THINKERS CAMPUS

Examples for results and outcomes





NEW YEAR RECEPTION



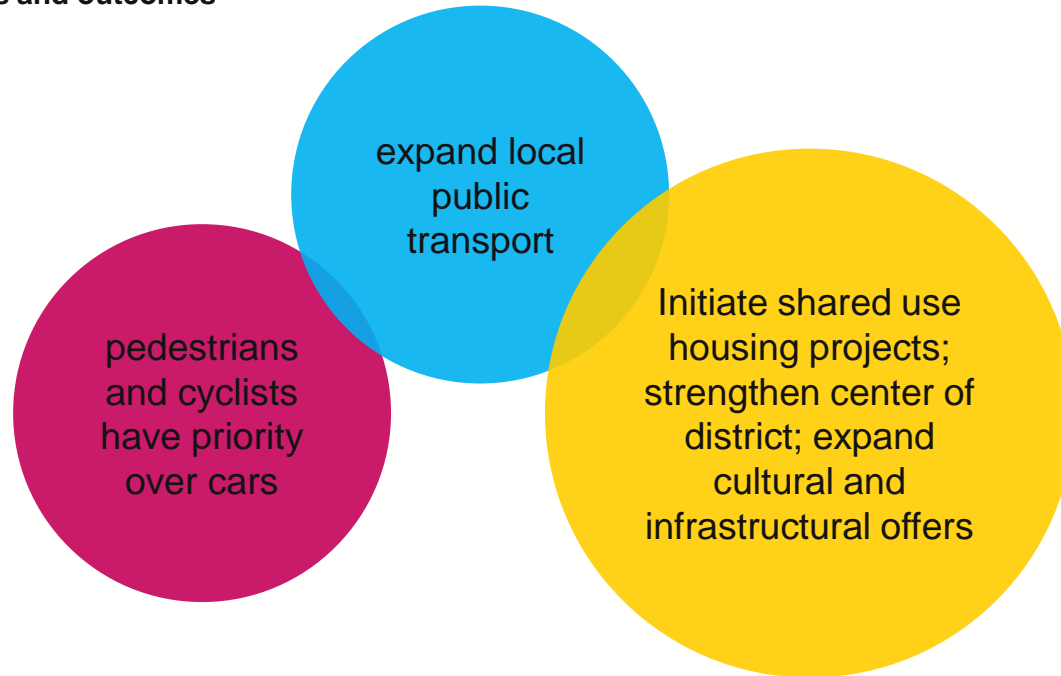


DIALOGUE WORKSHOP WITH THE LORD MAYOR OF MANNHEIM



DIALOGUE WORKSHOP WITH THE LORD MAYOR OF MANNHEIM

Examples for results and outcomes



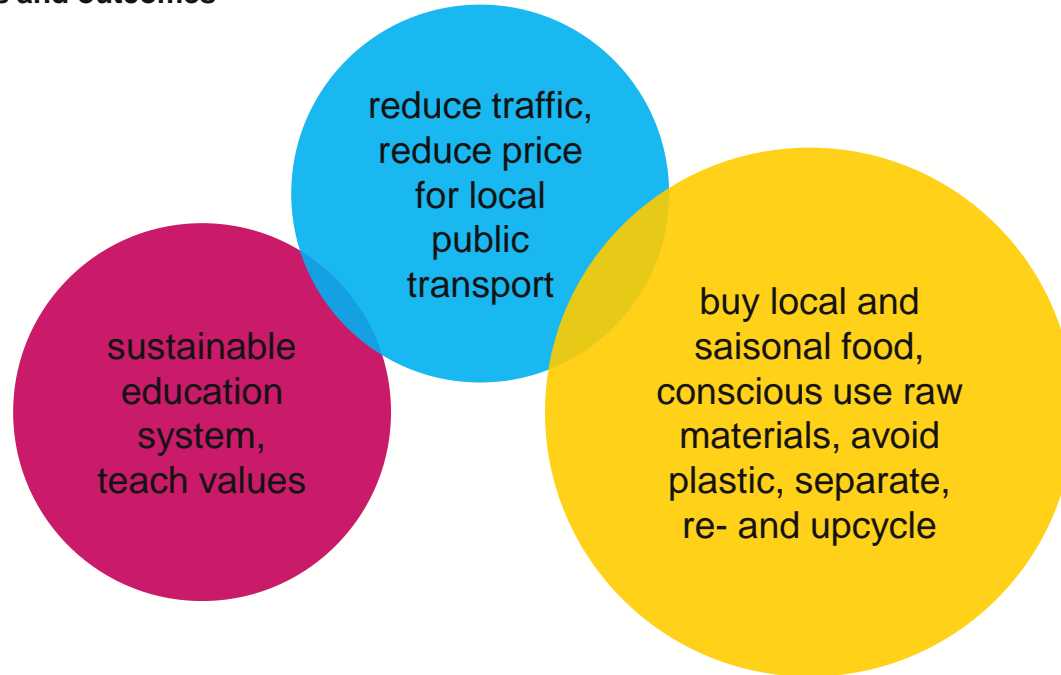


CONCLAVE OF THE LOCAL COUNCILS



CONCLAVE OF THE LOCAL COUNCILS

Examples for results and outcomes





MAY MARKET



MAY MARKET

Examples for results and outcomes





EVENTS BY THIRD PARTIES

EVENTS BY THIRD PARTIES

Examples for results and outcomes

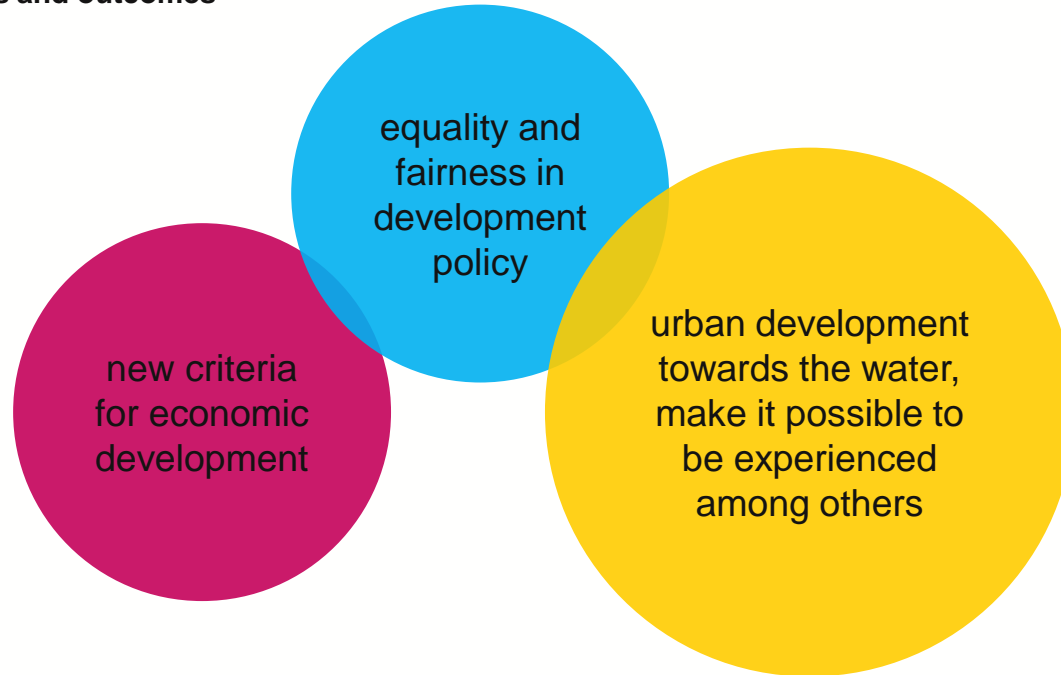




DIALOG WITH CITIZENS

DIALOG WITH CITIZENS

Examples for results and outcomes





**INTERNATIONAL SDG
CONFERENCE**



